

VELLEMAN PCS100 CALIBRATION INSTRUCTIONS

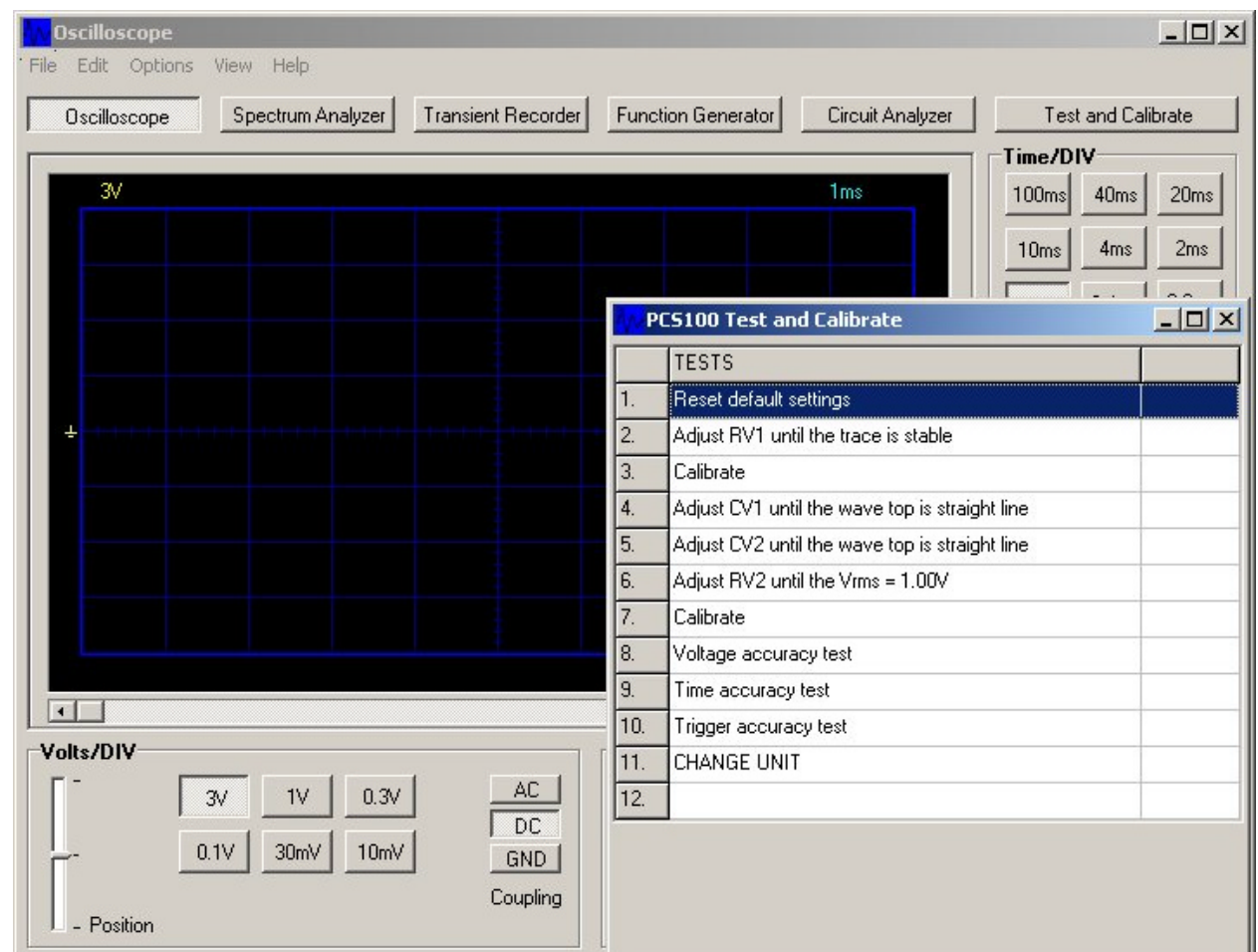
Before calibrations, be sure to check the PC generator:

The generator will generate all the signals to test and calibrate the PCS100
No extra tools are needed

How to Calibrate the PC generator?

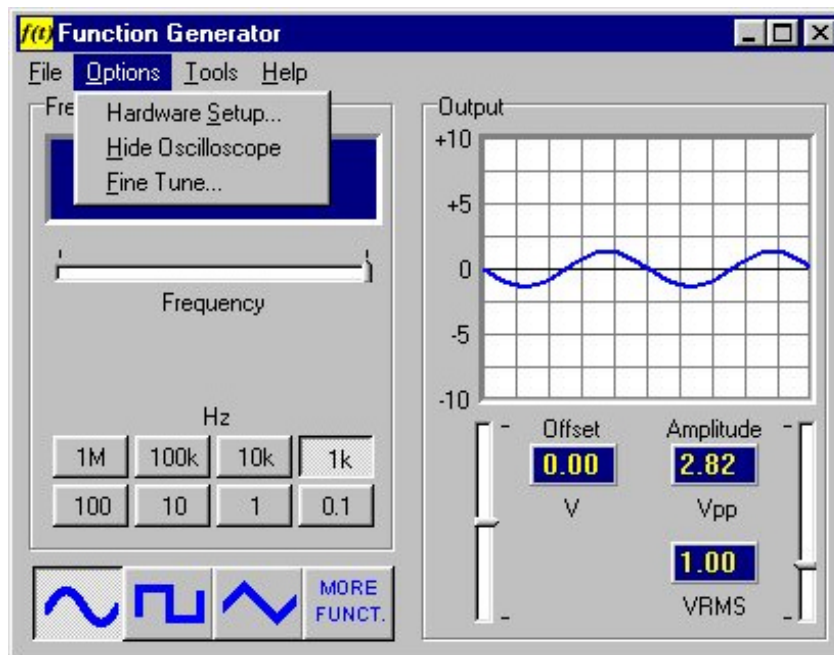
- Connect power 12VDC to the generator
- Connect the PC to the generator parallel port
- Connect the output to a True rms meter

Start the PCS100 test program

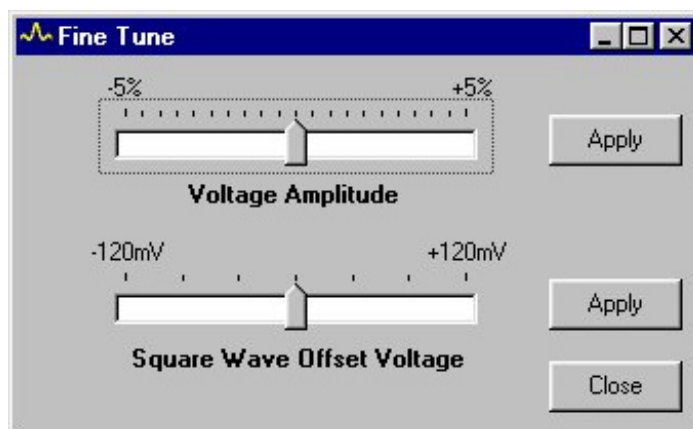


- If necessary close the test and calibrate window

- Select “function generator”
- Press sine wave / 1KHz
- Set output at 1Vrms (2.82Vpp)



- Select “fine tune”

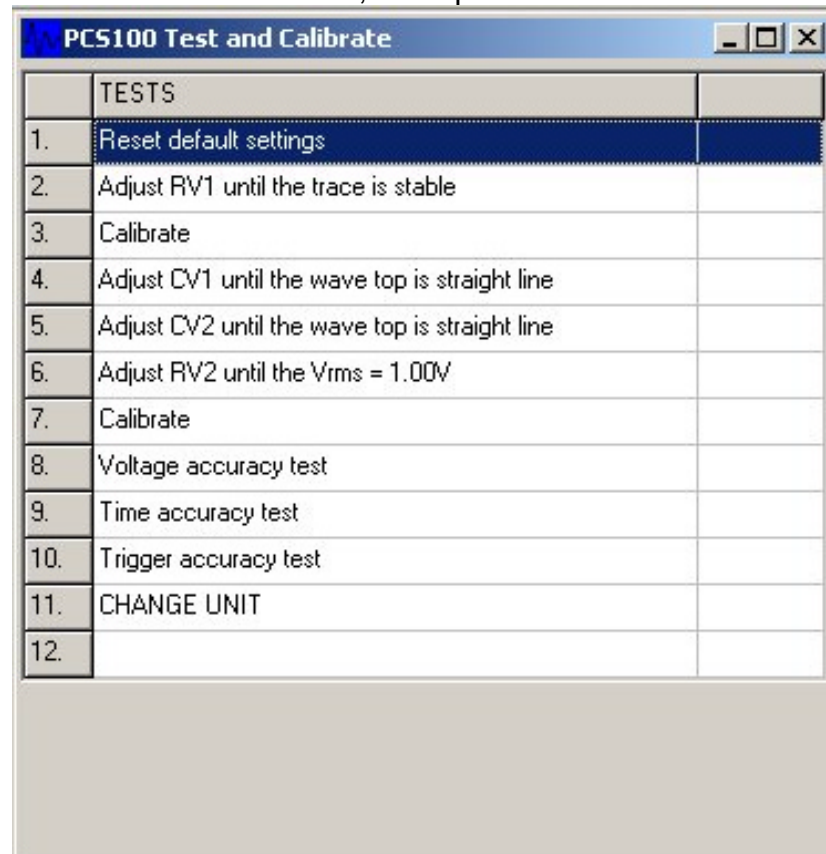


- Adjust fine tune (press “apply”) until output is correct with True rms meter.
- Now the generator is calibrated via software.
- Close the fine tune window and generator window
- Please check **before** a PCS100 production calibration.
- Recalibrate when other computer is used or when software is reinstalled!

Now the PCS100 can be calibrated

- Connect the input with the generator output
- Connect the PCS100 to the generator parallel port
- Connect 9Vdc / 500mA to PCS100
- Start the PCS100 test software (if not already started)

☞ The calibrate window should start, if not press “Test and Calibrate”



☞ Double click each test or use the arrow keys to select the test

Important:

Follow the tests in the correct order!! From 1 to 11