

# **VELLEMAN PCS500 CALIBRATION INSTRUCTIONS**

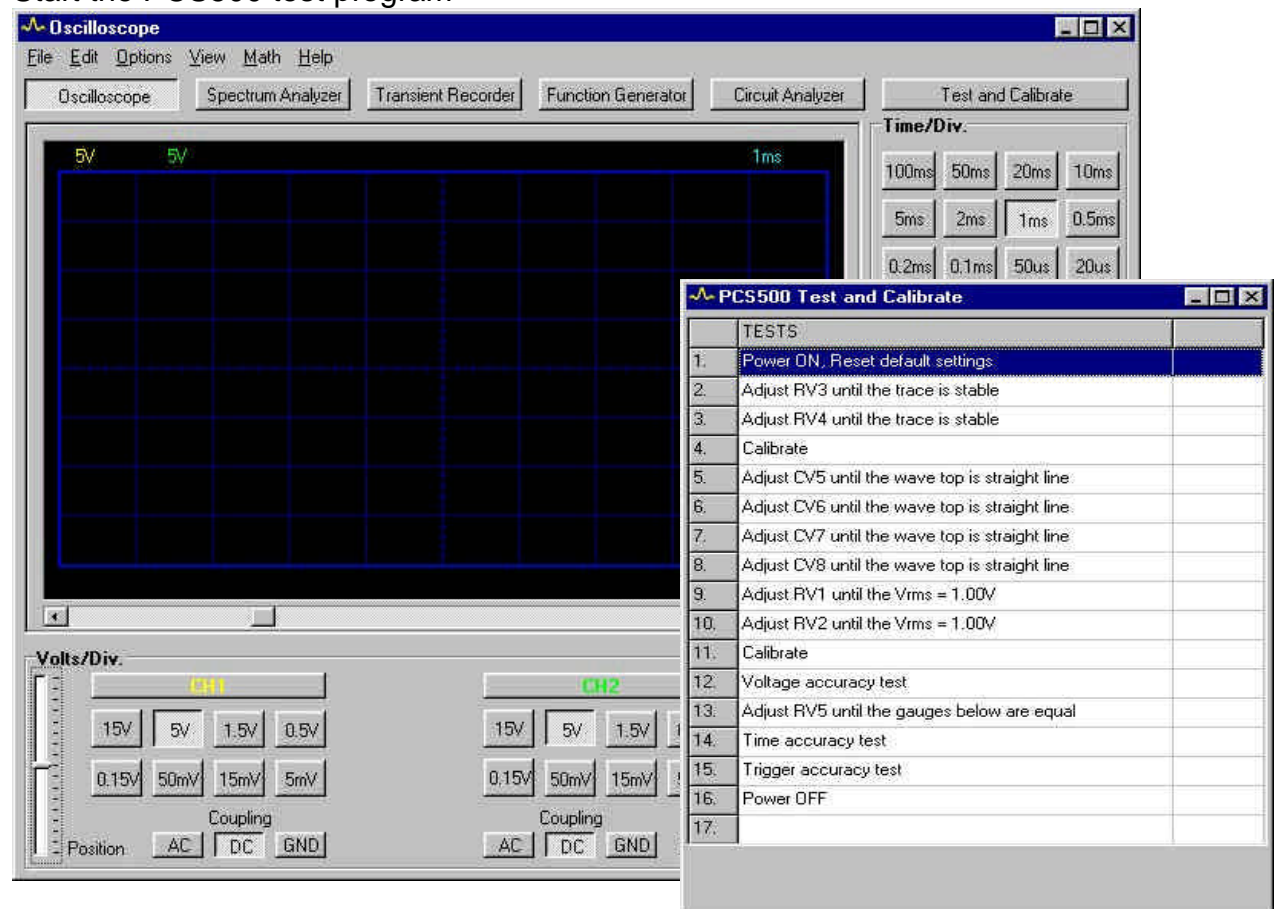
## Before calibrations, be sure to check the PC generator:

The generator will generate all the signals to test and calibrate the PCS500  
No extra tools are needed

How to Calibrate the PC generator?

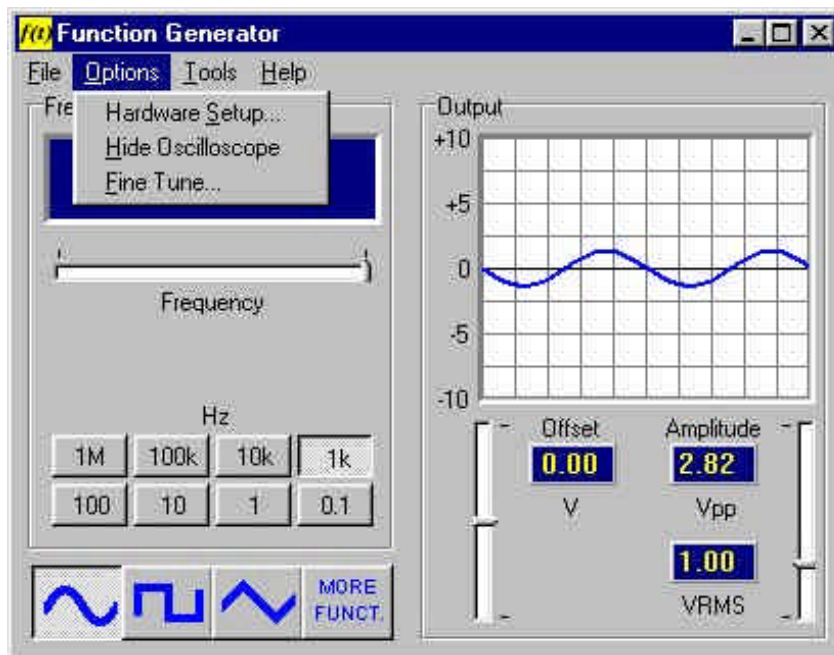
- Connect power 12VDC to the generator
- Connect the PC to the generator parallel port
- Connect the output to a True rms meter

Start the PCS500 test program

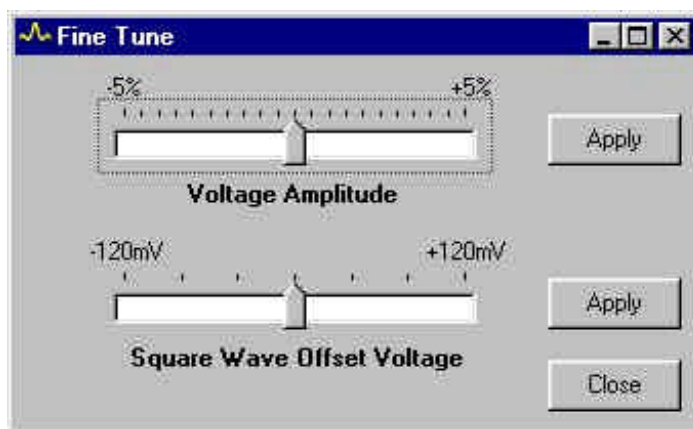


- If necessary close the test and calibrate window

- Select “function generator”
- Press sine wave / 1KHz
- Set output at 1Vrms (2.82Vpp)



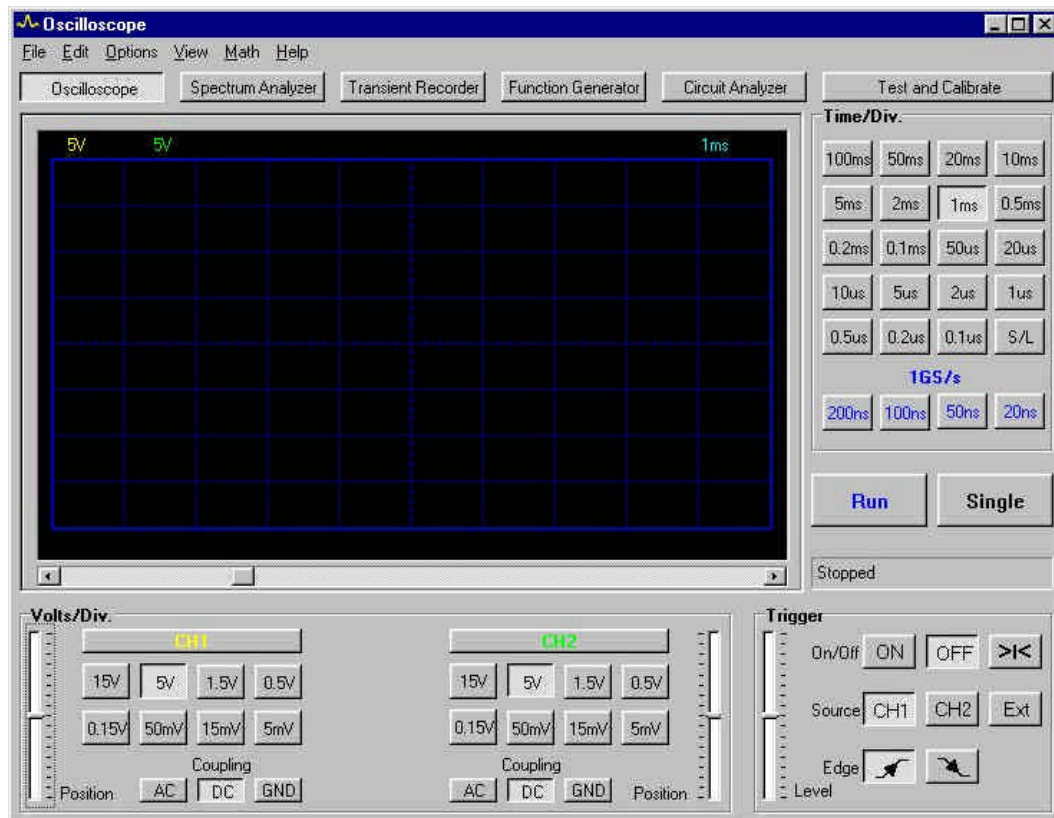
- Select “fine tune”



- Adjust fine tune (press “apply”) until output is correct with True rms meter.
- Now the generator is calibrated via software.
- Close the fine tune window and generator window
- Please check before a PCS500 production calibration.
- Recalibrate when other computer is used or when software is reinstalled!

## Now the PCS500 can be calibrated

- Connect the 3 inputs with the generator output
- Connect the PCS500 to the generator parallel port
- Connect 9Vdc / 1A to PCS500
- Start the PCS500 test software (if not already started)



☞ The calibrate window should start, if not press “Test and Calibrate”

PCS500 Test and Calibrate		
	TESTS	
1.	Power ON, Reset default settings	
2.	Adjust RV3 until the trace is stable	
3.	Adjust RV4 until the trace is stable	
4.	Calibrate	
5.	Adjust CV5 until the wave top is straight line	
6.	Adjust CV6 until the wave top is straight line	
7.	Adjust CV7 until the wave top is straight line	
8.	Adjust CV8 until the wave top is straight line	
9.	Adjust RV1 until the $V_{rms} = 1.00V$	
10.	Adjust RV2 until the $V_{rms} = 1.00V$	
11.	Calibrate	
12.	Voltage accuracy test	
13.	Adjust RV5 until the gauges below are equal	
14.	Time accuracy test	
15.	Trigger accuracy test	
16.	Power OFF	
17.		

☞ Double click each test or use the arrow keys to select the test

**Important:**

**Follow the tests in the correct order!! From 1 to 16**